

2-Day Salmon Migration Marvellous Spectacle Tour

SS02

2026 Departure Dates:
Oct 3-17 (Every Sat)



Tour Fare: guide, transport, hotels, and transfers included (Child same price)

| SS02 | Single | Twin | Triple | Quad |
|-----------|--------|-------|--------|-------|
| Tour Fare | \$395 | \$295 | \$215 | \$195 |

Highlights

[Rogers Pass]

Located in the heart of the Canadian Rockies, Rogers Pass is known for its spectacular mountain scenery, glacier views, and rich railway history, making it a popular destination for nature lovers.

[Salmon Arm]

An important spawning area for Pacific salmon, known for its beautiful lake views, peaceful natural scenery, wineries, fresh fruits, and local farm products.

[Last Spike Monument]

A historic site marking the completion of the Canadian Pacific Railway, symbolizing the connection of Canada and honoring the contributions of Chinese railway workers.

[Dutchman Dairy Farm]

A hands-on farm experience where visitors can see cows, learn about milk production, and enjoy fresh ice cream and dairy products.

Departure Time/Location



- 08:00AM Calgary Safeway North Hill Mall
Address: 1632 14 AVE NW, Alberta T2N 1M7
- 09:35AM Banff Aspen Lodge
Address: 401 Banff Ave, Banff, Alberta T1L 1A9

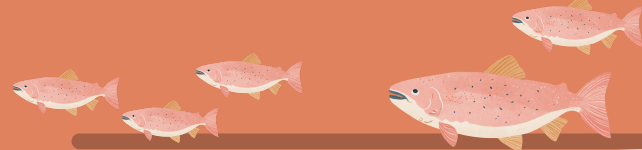
- All optional admissions and activities depend on suppliers' daily operations and may change without notice.
- If closure of any sightseeing point occurs, it will be replaced by alternative attractions
- The itinerary sequence, hotel arrangements, tour guide, and vehicle might be subject to change due to departure date, but the core itinerary and services will remain the same
- The basic tour fare excludes: driver and guide gratuities (CAD\$15 per guest per day), national park entrance fees and breakfast (compulsory selection during booking), 5% GST (Goods & Services Tax), optional activities during the tour, personal expenses, lunches and dinners, and airfare.

Itinerary

Day 1 CALGARY — CASTLE MOUNTAIN — ROGERS PASS — THREE VALLEY GAP — SALMON ARM SALMON RUN

Hotel: Salmon Arm Prestige Harbourfront Resort

Day 2 SALMON ARM — FRUIT ORCHARD — ICECREAM FARM— LAST SPIKE MONUMENT — YOHO NATIONAL PARK REST STOP — CALGARY



Updated on May 11, 2026

- Calgary Tours will try its best to reduce the impact on customers due to data errors (such as the website itself) and any other reasons but does not assume any losses or legal liability. If there is any discrepancy between the content of the website and the notices, regulations, contracts, instructions, itineraries, and other documents issued by the company, the final confirmation document sent by the company shall prevail.
 - Calgary Tours has the right to change the order of the tour or cancel any tour items and accommodation locations in the itinerary and has the right to extend or shorten the itinerary. Group members may not object for any reason.
 - Any losses or additional expenses incurred during the trip will be borne by the guest.
 - Calgary Tours shall not be liable for failure in the performance of its obligations for any loss or damage resulting from any delay, cancellations, loss of personal belongings, illness, bodily injury, accident, death, deterioration of services, inconvenience, loss of enjoyment, disappointment, or frustration (either mental or physical), attributable to a fault, negligent act or omission by a provider or any employee thereof. Each agency has various regulations; it is responsible for passengers, and in case of accidental casualties or property damage, it should be resolved in accordance with the safety regulations established by various agencies.